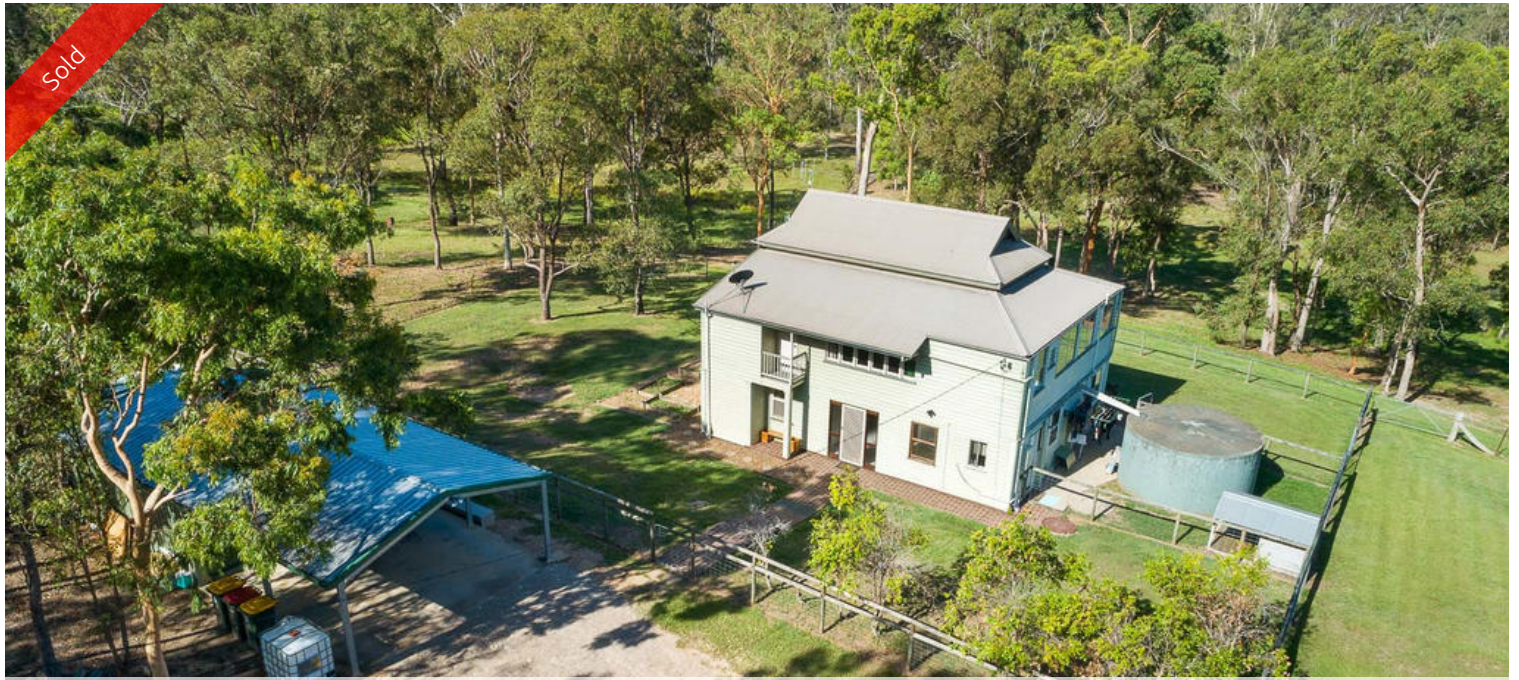


Sold



110 Eatonvale Rd, Tinana



Tinana Acreage – Convenient Location \$319,000.00

If you are looking for a country feel with room for horses and pets, yet need the convenience of schools, shops and other facilities right on your doorstep, 110 Eatonvale Road will tick the boxes.

Positioned on an elevated 2.5 acre allotment, features include: - 4 bedrooms, two living areas, full length verandah overlooking rear paddock, galley kitchen, polished floors and timber staircase.

The property is divided into four paddocks with the house yard securely dog fenced.

The back paddock boasts a small dam and plenty of room for a couple of horses, goats or whatever the heart desires.

The front paddock features split rail fencing. It has been selectively cleared and comes with a two bay shed with double carport attached to the front.

Acreage living just 6 minutes from the CBD.

To arrange your inspection contact the Exclusive Agent – Steve Anderson on 0417 009 790.

The above information provided has been furnished to us by the vendor/s. We have not verified whether or not that information is accurate and do not have any belief in one way or the other in its accuracy. We do not accept any responsibility to any person for its accuracy and do no more than pass it on. All interested parties should make and rely upon their own inquiries in order to determine whether or not this information is in fact accurate.

🛏 4 📶 1 🚗 4

Price	SOLD for \$305,000
Property Type	residential
Property ID	2250
Land Area	1.03 ha

Agent Details

Steve Anderson - 0417 009 790

Office Details

Maryborough
Shop 1 224 Adelaide St Maryborough
QLD 4650 Australia
07 4123 6736

